



iD INSPACE
DEFINITION

Compact Sound Reinforcement System

www.nexo-sa.com

NEXO

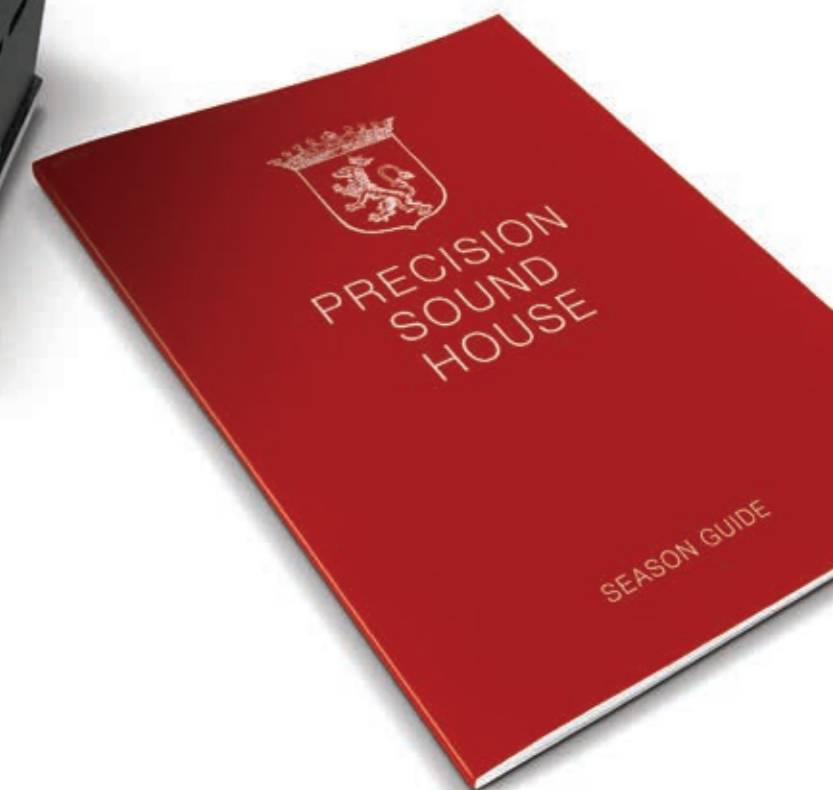
Complete directivity control comes to compact power.

With a unique user-rotatable horn that lets users quickly select between two preset directivity options, ID24 brings unparalleled flexibility to the world of compact speakers with a cabinet that delivers trademark NEXO sound and performance, whether mounted horizontally or vertically.



Horizontal rotation

Vertical rotation



Designed to meet the requirements of the widest range of applications, ID24 is ideal as part of a full-range system, or as a dedicated 'sound beaming' unit in difficult spaces.

Mounted horizontally or vertically, ID24 delivers superior performance in all scenarios. Three distinct ID24 specifications are available – ID24i for installation, ID24t for touring and ID24c (carte), which allows the perfect speaker to be configured from an extensive list of options (see page 3). ID24i is 'all-weather' IP54 rated.

ID24i (Install Spec)

Spec'd for the installation professional and designed for the widest range of applications, ID24i (install spec) features threaded holes for compatibility with NEXO and 3rd-party mounting hardware, including the IDI-WB02 and IDI-WM01. For rapid installation ID24i is equipped with captive cable for fast, secure connectivity with existing wiring.

Install models are available in Black or White with a matching fabric grille.

ID24t (Touring Spec)

Primed for all touring applications, the ID24t (touring spec) features Speakon connectors and quick release rigging points for easy mounting - horizontally or vertically.

ID24t is compatible with a range of NEXO accessories including the IDT-TCBRK2538 and IDT-TCBRK3851 small and large quick release truss mounting hooks, the IDT-GSTK quick release adjustable floor stand and the IDT-TVP bolt adaptor for pole stand mounting.

Touring models are available in Black with a matching steel grille.



A la carte. Unprecedented choice for specifiers.

For applications that require the greatest degree of customisation, NEXO offers the ID24c. Specifiers can choose from the following options to design the speaker that perfectly meets requirements.

Directivity

ID24c horn directivity options include:

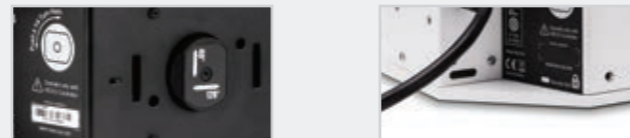
- 120° x 40°
- 90° x 40°
- 60° x 60°
- 120° x 60°



Rotable horn means all HF coverages are reversible

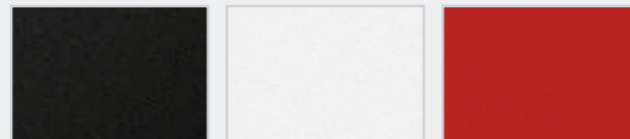
Mounting Options

Spec with quick release rigging points or threaded holes



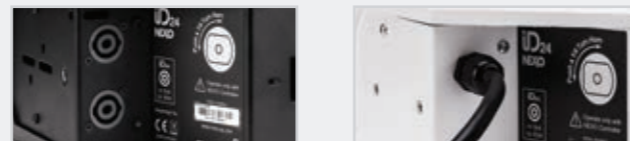
Colours

Choose Black, White - or any RAL colour to suit the environment



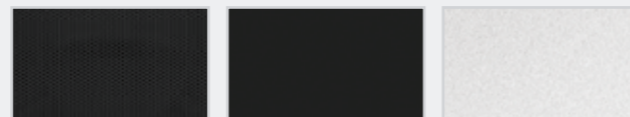
Connectivity

Choose from Speakon and Captive Cable



Grille

Select steel or fabric



Note - An EN-54 compliant model will be made available. Full details available on request.

ID Series subs. Serious low end. Seriously low profile.

Complementing the ID24 speakers are two compact, powerful subs, both available in install and touring versions. With a low-profile, sleek design, ID Series subs are easily installed discretely in a wide range of locations - within walls, staircases, under furniture and more.



ID S110 - 1x10" sub

Compact and powerful, the 1x10" sub measures just 285mm high x 525mm wide x 550mm deep, offering punchy sub bass performance in the smallest form factor. (ID S110t touring version pictured).



ID S210 - 2x10" sub

For applications where space is less restricted, the 2x10" double sub delivers stunning performance in a box measuring just 285mm high x 1050mm wide x 550mm deep. (ID S210i install version pictured).



Commercial Audio



Theatre Sound



Touring / AV



Horizontal mounting

Compact and powerful, ID speakers and subs are ideal for discreet horizontal placement, bracketed to walls or ceilings.



Vertical mounting

With innovative V formation drivers, ID24 is equally at home whether mounted horizontally or vertically.



Under-balcony

Ideal for theatre applications, ID24 units can be used under balconies to reach the audience areas that the main system does not cover.



Stage front-fill

Use ID24 to 'beam' sound into the first rows of the audience from the stage, ensuring total coverage and the best listening experience throughout a venue.



Pole-mounting

For touring applications, ID24 can be quickly and easily pole-mounted using the optional IDT-TVP mounting bracket.



Flown and wedge

For live sound applications, ID24 is a single box solution that can be flown or even used as a wedge thanks to its innovative angled design.

Application-focussed design.

NXAMP4X1

One amp for 16 speakers

The versatility of the ID24 system extends to a highly cost-effective amplification solution capable of powering large numbers of units and integrating seamlessly with other NEXO products.

A single NXAMP4X1 - the smallest of NEXO's Powered TDControllers - can power up to 16x ID24 units. With 'channel-by-channel' preset selection for all NEXO cabinets and linear phase on all set-ups, it's easy to integrate subbass cabinets such as the NEXO ID S110 and ID S210 into a single amplifier solution. Networks of NXAMPs can be monitored using NEXO's NeMo Remote Monitoring App, available free for iPad® and iPhone®.

Key Features

- NXAMP4x1 is among the industry's most powerful amplifiers
- Cost effective integration of command, control, protection and amplification of all NEXO loudspeaker systems
- Lighter and requires less rack space than conventional amplifier processor systems
- Eliminates unnecessary A/D conversion
- Optional AES digital input, and EtherSound or Dante™ network input



Power up to 16 ID24 units from a single NXAMP4X1

DTD Controller

ID24 processing made simple

The DTD Digital TD Controller makes it easy to configure ID speaker systems using amplification from other manufacturers.

Now it's possible to choose exactly the right size and scale of amplification, making ID range speakers accessible in a wide range of applications from small mobile systems to more sophisticated multi-cabinet installations. With advanced speaker control processing taken from the NEXO NXAMP, the DTD Digital TD Controller also delivers dramatic improvements in sonic performance over previous analog TD Controllers.

Key Features

- Compatible with amplifiers of every size and scale
- Dramatic sonic improvements over previous analog devices
- Comprehensive analog and digital connectivity plus Dante™
- Optional plug-and-play operation with automatic amplifier sensing
- Touring and install versions available

DTD-T touring version



The DTD-T touring version features analog input and output connectors on the front panel, removing the need for an additional patch panel

DTD-I install version



With all connectors except mini-USB located on the back panel, the DTD-I install version is set up from a Mac/PC computer

ID24 compact full-range speaker

309mm wide, 132mm high and 233mm front to back, the ID24 is a compact full range speaker using twin 4 inch drivers in a V formation plus an HF compression driver with rotatable horn. The horn can be rotated easily without the need for tools by a 'screw head' on the rear panel to give 120° x 40° or 40° x 120° HF coverage with the standard horn fitted. This increases the flexibility of the cabinet by allowing the HF horizontal dispersion to be 'tuned' for the given application – installed or touring.



Specifications

iD24 with NEXO TDController setup			
	ID24i	ID24t	ID24c
Frequency Range	95Hz – 20kHz (+/- 6dB)		
Sensitivity (1W / 1m)	100dB SPL Nominal		
Peak SPL Level (1m)	126dB Peak		
HF Dispersion (according to horns)	Selection of: 60° x 60° 90° x 40° 120° x 40° 120° x 60°		
Nominal Impedance	16Ω		
Recommended Amplification per box	200 to 500W		

PRODUCT FEATURES

	ID24i	ID24t	ID24c
Components	LF: 2x4" – Long excursion – Neodymium magnet HF: 1" voice coil 1/2" throat – Neodymium magnet		
Height x Width x Depth	132 x 309 x 233mm (5.2" x 12.2" x 9.2")		
Weight	6 Kg (13 lbs)		
Material	Water-resistant Polyurethane		
Finish	White: Structural paint Black: Raw sandblasted polyurethane		A la carte
Grille	Stainless steel Acoustic fabric, black or white	Stainless steel Black paint	A la carte
Rigging	6x 6mm threaded inserts	6x points for quick rigging M10 threaded insert	A la carte, among: 6x inserts 6mm 6x points for quick rigging M10 threaded insert

SYSTEM OPERATION

Electronic Controllers	NXAMP4x1 and 4x4 Powered Controller DTD - Controller + DTDamp 4x0.7 DTD - Controller + DTDamp 4x1.3 The NEXO controller presets are precisely matched to the ID Series cabinets and include sophisticated protection. Using ID Series cabinets without properly connected NEXO controllers will result in poor sound quality and can damage components.
Sub Bass	ID S110 and ID S210 low profile subwoofers

As part of a policy of continual improvement, NEXO reserves the right to change specifications without notice.

ID S110 & ID S210 low-profile subs

There are 1x10" and 2x10" subs available to complement the ID24. Both are low-profile. The 1x10" measures 285mm high x 525mm wide x 550mm deep, and the 2X10" is 285mm high x 1050mm wide x 550mm deep.



Specifications

ID S110 and ID S210 with NEXO Controller setup		
	ID S110	ID S210
Frequency Range	43 Hz - 130Hz (+/- 3dB)	43Hz - 130Hz (+/-3dB)
Sensitivity (1W / 1m)	97 dB SPL Nominal	103 dB SPL Nominal
Peak SPL Level (1m)	125dB Peak	131dB Peak
Crossover Frequencies	85Hz / 120Hz	85Hz / 120Hz
Nominal Impedance	4Ω	2Ω
Recommended Amplification	400W to 650W	800W to 1300W

PRODUCT FEATURES

	ID S110	ID S210
Components	1x10" Long excursion	2x10" Long excursion
Height x Width x Depth	285 x 525 x 550mm (11.2" x 20.7" x 21.7")	285 x 1050 x 550 mm (11.2" x 41.3" x 21.7")
Weight	21kg (47lbs)	37 kg (82lbs)
Material	Finnish birch plywood	Finnish birch plywood
Finish	Black structured paint	Black structured paint
Rigging	4x M6 inserts M20 flange (t version only)	4x M6 inserts M20 flange (t version only)

SYSTEM OPERATION

Electronic Controllers	NXAMP4x1 and 4x4 Powered Controller DTD - Controller + DTDamp 4x0.7 (IDS110 only) DTD - Controller + DTDamp 4x1.3 (IDS110 only) The NEXO controller presets are precisely matched to the ID Series cabinets and include sophisticated protection. Using ID Series cabinets without properly connected NEXO controllers will result in poor sound quality and can damage components.
Main System	ID24

As part of a policy of continual improvement, NEXO reserves the right to change specifications without notice.

Installation and Touring Accessories

IDT-TCBRK2538 Truss Clamp Adaptor. 25-38mm.	IDT-TCBRK3851 Truss Clamp Adaptor. 38-51mm.	IDT-QRA Truss Clamp Fitting.	IDI-WM01 IDI-WM01-PW Black or White Speaker Wall Mount.	IDI-WB02 IDI-WB02-PW Black or White Universal Speaker Wall Mount.	IDT-GSTK Ground Stacking Accessory.	IDT-TVP Bolt Adaptor M10 to 35mm.

Architectural and engineering specifications are available at www.nexo-sa.com



NEXO S. A.

Parc D'Activité
du Pré de la Dame Jeanne
B.P.5
60128 PLAILLY
France
Tel: +33 (0)3 44 99 00 70
Fax: +33 (0)3 44 99 00 30
E-mail: info@nexo.fr