

EASE 44 FILES FOR NEXO SPEAKER SYSTEMS

December, 15, 2015

INSTALLATION

Create a NEXO sub-directory in ... *EASE40Data\Global Speakers40* folder and copy all GLL files into it.

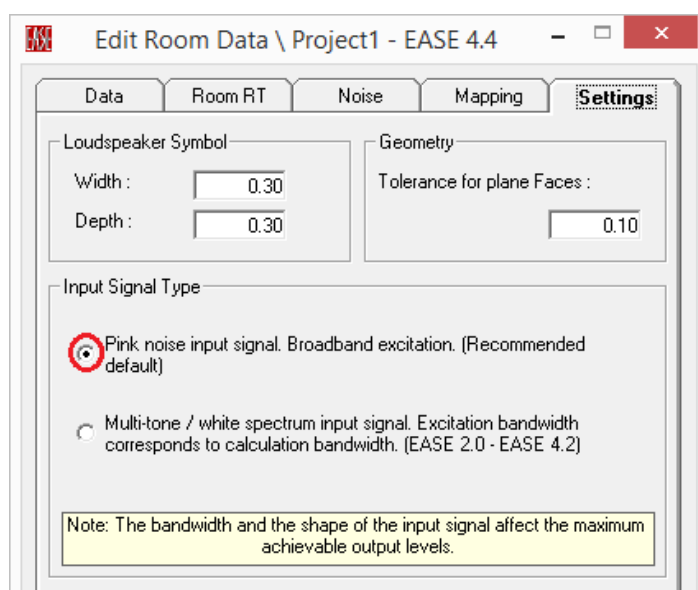
NEXO EASE 44 GLL files

Enclosed GLL files cover the full NEXO speaker catalogue as of today:

PS8.gll	GLL files for PS8 and LS400
PS10.gll	GLL files for PS10 and LS600
PS15.gll	GLL files for PS15 and LS18
ID.gll	GLL files for ID24, ID110 and ID210
GEOS12_vert.gll	GLL files for GEOS12 and GEOS12 ST flown or stacked vertical arrays
GEOS12_hor.gll	GLL files for GEOS1230 flown horizontal arrays
GEO M6.gll	GLL files for GEOM6 arrays
STM.gll	GLL files for STM array
RS.gll	GLL files for RS15 and RS18 subs

NOTES

- When using NEXO GLL files, *Edit / Room data / Settings / Input Signal Type* must be selected to "Pink noise input signal. Broadband excitation."

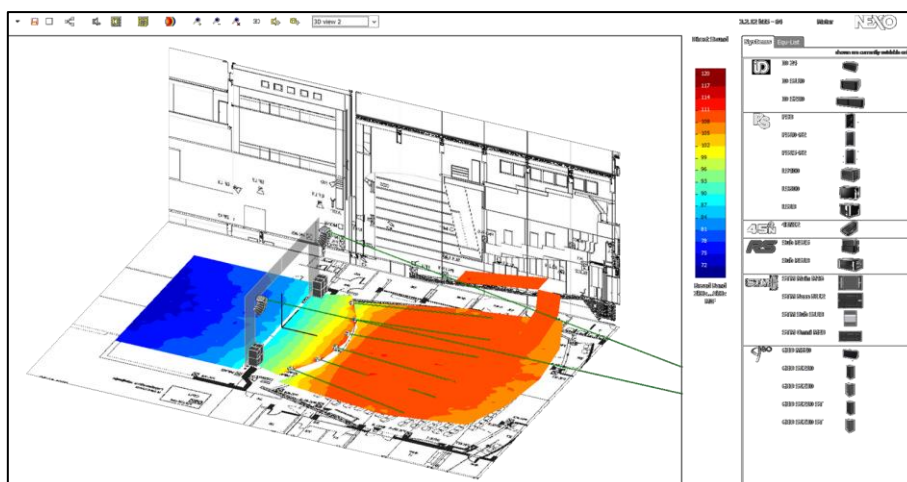


NEXO S.A.
 Parc d'Activité
 du Pré de la Dame Jeanne
 B.P.5
 60128 PLAILLY
 Tel: +33 (0) 3 44 99 00 70
 Fax: +33 (0) 3 44 99 00 30
 e-mail: info@nexo.fr
 SIRET: 317 272 540 00046
 APE: 2630Z

www.nexo.fr

- NEXO NS1 simulation software must be used prior to EASE modelling in order to optimize direct sound coverage from GEO and STM systems.

NS1 simulation software is available on www.nexo-sa.com



- Make sure the angles of the speakers are properly applied in arrays. Re-click on every angle tab and check the angles are correctly displayed on the graph.
- Set the gain to 0dB to get the same SPL values in EASE and NS1 for one octave band calculations. For broadband (dBA) calculations there may be some small variations due to the different frequency bands taken into account in EASE and NS1.
- Since no computation is available in EASE 44 below 100 Hz, NEXO subwoofers are only included in the GLL files for display (RS15, RS18, LS400, LS600, LS18 and S118)

CONTACT

W: www.nexo-sa.com

E: technical@nexo.fr

P: +33 3 44 99 00 70

NEXO S.A.
 Parc d'Activité
 du Pré de la Dame Jeanne
 B.P.5
 60128 PLAILLY
 Tel: +33 (0) 3 44 99 00 70
 Fax: +33 (0) 3 44 99 00 30
 e-mail: info@nexo.fr
 SIRET: 317 272 540 00046
 APE: 2630Z

www.nexo.fr