



NEXO S. A.

Parc D'Activité
du Pré de la Dame Jeanne
B.P.5
60128 PLAILLY
France
Tel: +33 (0)3 44 99 00 70
Fax: +33 (0)3 44 99 00 30
E-mail: info@nexo.fr

NEXO LatAm

Tel: +1 305 677 9322
Fax: +1 360 234 7870
Email: info@nexo.fr

NEXO Asia

GPO Box 806
Hong Kong
SAR China
Tel: +852 9096 3472
Fax: +852 2104 3214
E-mail: info@nexo.fr

www.nexo.fr

NEXO





Geo
M6

Compact Sound Reinforcement System

www.nexo.fr

NEXO





Geo M6 Compact Sound Reinforcement System





The compact sound system that fits into any environment

Powerful and flexible, NEXO GEO M6 delivers uncompromised full-range sound in a wide variety of fixed installations and mobile applications.

The visual impact of GEO M6 is subtle, thanks to compact design, an elegant internal rigging system and custom colour options. Comprising two identically-sized cabinets – the GEO M620 main and GEO M6B bass extension – and complemented by a comprehensive range of mounting accessories, GEO M6 offers installation contractors and sound rental companies a dependable, TÜV-certified system with an important difference: legendary NEXO performance.



Compact design

Cabinets measure just 191mm high x 373mm wide x 260mm deep.



Integral rigging

The 3-point rigging system is hidden inside the cabinet, reducing visual impact.



Elegant hardware

A comprehensive range of hardware is available for fixed and mobile applications.



Custom RAL colours

Lightweight polyurethane composite cabinets, fabric grilles and accessories can be specified in any RAL colour.



Theatres and conference halls



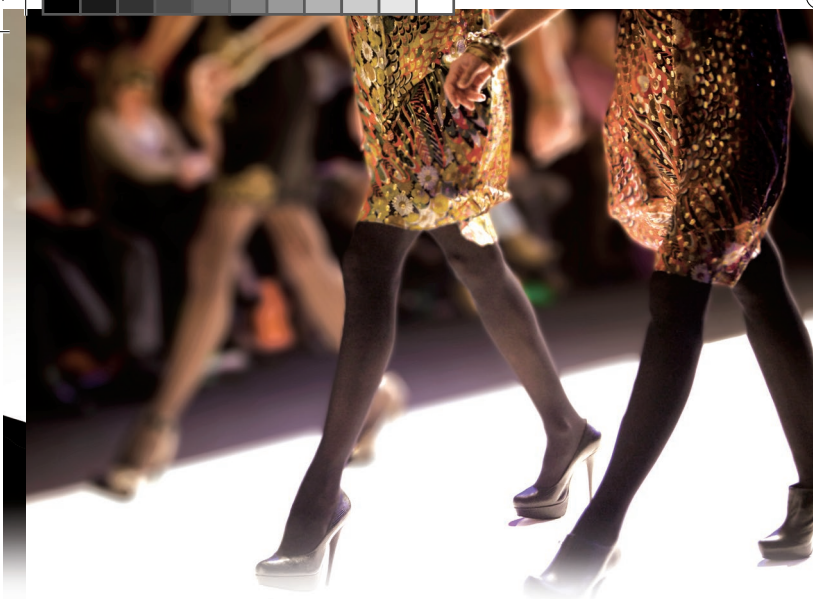
Corporate AV



GEO M620 main and M6B bass extension cabinets can be flown in the same array to create a compact, powerful and discreet system, ideal for installation in small theatres and conference halls.



Pole-mounting a pair of GEO M620 Main cabinets on a NEXO LS600 subbass cabinet quickly creates a high-output, full range system.



Live events



Public spaces



The combination of high power and low visual impact makes GEO M6 the perfect choice for use in live events. A comprehensive range of mobile rigging accessories makes it easy for contractors and rental companies to achieve exceptional sonic performance without impinging upon the production design.



NEXO has built a global reputation for the quality and performance of its concert line array systems. Now GEO M6 brings NEXO technology to installed sound applications, delivering the key benefits of uncompromised full range sound and consistent SPL coverage.

Flexibility without compromise



NEXOSkeleton™ Rigging System



Rocking the show with cutting-edge acoustic and mechanical design

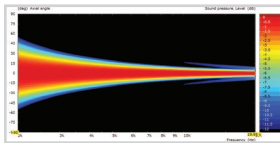
Drawing on more than 30 years' experience at the forefront of acoustic design, GEO M6 utilises a number of patented technologies to achieve exceptional levels of sonic performance.

And mechanical performance is similarly impressive. All structural forces acting on a GEO M6 cluster are born by the groundbreaking NEXOSkeleton™ rigging system, rather than the cabinets. Fully TÜV certified, any configuration of cabinets can be safety-checked, using NEXO NS-1 system configuration software.

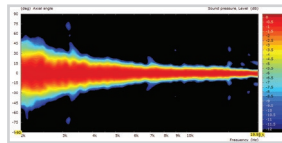
NEXO Hyperbolic Reflective Wavesource



GEO M6 utilises NEXO's patented Hyperbolic Reflective Wavesource (HRW™) to control acoustic energy by creating a virtual wavesource 'outside the box', resulting in optimal wavesource coupling without destructive interference.

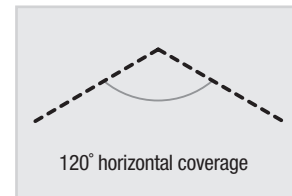
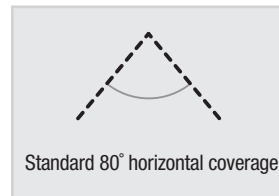


Ideal theoretical response



Actual measured response

NEXO Waveguide Flanges



System flexibility can be increased by adding flanges to the HF waveguide exit, changing the standard 80° acoustic coverage across the horizontal plane to 120°.

NEXO Directivity Phase Device



A Directivity Phase Device (DPD) on each cone driver extends the upper frequency limit for field source coupling between adjacent speakers. 6.5" drivers coherently couple as if there were twice as many 3.25" cones mounted at half the physical distance.

Port tube profiling



Internal faces of the port tube are profiled to ensure smooth air flow, reducing turbulence to increase low frequency efficiency and linearity at high power.



Flown arrays



Groundstacks with L



NXAMP4X1_{MK2}

Just one amplifier is all it takes

The versatility of the GEO M6 system extends to a highly cost-effective amplification solution.

A single NXAMP4X1_{MK2} – the smallest of NEXO's powered TDControllers – can power up to 12x GEO M6 cabinets. And with 'channel-by-channel' preset selection for all NEXO cabinets and linear phase on all set-ups, it's easy to integrate subbass cabinets such as the NEXO LS600 into a single amplifier solution.

Larger networks of NXAMPs can be monitored using the NEXO's NeMo Remote Monitoring App, available free for iPad® and iPhone®.



NEXO

h LS600 subwoofers

Pole-mounted on LS600 subwoofers



NXAMP4X1_{MK2}
Powered TDController

Geo M6²⁰

The GEO M620 is a full-range unit for stand-alone, curved array or line array application. Extremely compact in size (191 x 373 x 260 mm), the M620 module punches well above its weight of less than 10 kgs. Using a NEXO-designed long-excursion high-efficiency 6.5" LF driver and a 1" throat driver on a BEA/FEA optimised HR Wavesource, the M620 delivers a frequency response of 80Hz-19kHz ± 3 dB, with nominal peak SPL of 127dB. HF dispersion is 80° or 120° horizontal, with 20° vertical coverage, 0° to 20° splay when arrayed. Using NEXO's HRW patented waveguide for optimum HF coupling between elements, the M620 performs in a variety of configurations, facilitated by a fully-integrated 3-point rigging system.



Geo M6^B

The GEO M6B is a low and mid-frequency partner module to the GEO M620, for applications which demand more powerful reinforcement, such as live music. With one 6.5" 8 Ω long-excursion driver, the M6B weighs just 7.6kgs and shares the same physical footprint as the M620 allowing the cabinets to be arrayed together in the same column. Featuring a flare-shaped port tube to increase low frequency efficiency and linearity at high power, the M6B offers a usable range @-6dB of 70Hz-1kHz.



Specifications

GEO M620 with NEXO TDController setup

Frequency Response	80Hz – 19kHz ± 3 dB
Usable Range @-6dB	75Hz – 20kHz
Sensitivity 1W @ 1m	95dB SPL Nominal
Nominal Peak SPL @ 1m	127dB
HF Dispersion	80° or 120° Horizontal (CCD)
Crossover Frequencies	LF-HF: 2kHz Passive
Nominal Impedance	8 Ω
Recommended Amplifiers	450W per box (3 boxes max in parallel on one channel amplifier)

PRODUCT FEATURES

Components:	LF: 1 x 6.5" 8 Ω long excursion driver HF: 1 x 1" throat driver on a BEA/FEA optimised HR Wavesource
Height x Width x Depth	191mm x 373mm x 260mm
Weight: Net	9.7kg
Connectors	2 x NL4 Speakon 4 poles
Construction	Lightweight Polyurethane composite
Fittings:	Handles Side Handles
	Front Finish Acoustic Fabric fitted front grille

SYSTEM OPERATION

Electronic Controller	The NEXO TDController's presets are precisely matched to the GEO M6 Series cabinets and include sophisticated protection. Using GEO M6 Series cabinets without a properly connected NEXO TDController will result in poor sound quality and can damage components.
Speaker Cabling	2+/2-

Specifications

GEO M6B with NEXO TDController setup

Frequency Response	75Hz – 120Hz ± 3 dB (preset-dependent)
Usable Range @-6dB	70Hz – 1kHz
Sensitivity 1W @ 1m	94dB SPL Nominal
Nominal Peak SPL @ 1m	125dB
Nominal Impedance	8 Ω
Recommended Amplifiers	450W per box (3 boxes max in parallel on one channel amplifier)

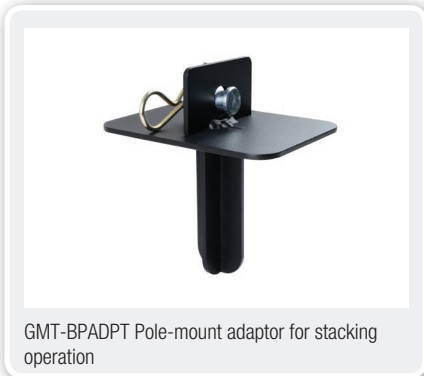
PRODUCT FEATURES

Components:	LF: 1 x 6.5" 8 Ω long excursion driver
Height x Width x Depth	191mm x 373mm x 260mm
Weight : Net	7.6kg
Connectors	2 x NL4 Speakon 4 poles
Construction	Lightweight Polyurethane composite
Fittings:	Handles Side Handles
	Front Finish Acoustic Fabric fitted front grille

SYSTEM OPERATION

Electronic Controller	The NEXO TDController's presets are precisely matched to the GEO M6 Series cabinets and include sophisticated protection. Using GEO M6 Series cabinets without a properly connected NEXO TDController will result in poor sound quality and can damage components.
Speaker Cabling	1+/1-

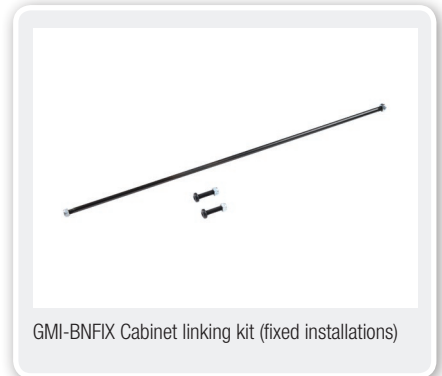
Architectural and engineering specifications are available at www.nexo.fr



GMT-BPADPT Pole-mount adaptor for stacking operation



GMT-LBPADPT Angle setting plate for 3-cabinet clusters (hanging or pole mounted)



GMI-BNFIK Cabinet linking kit (fixed installations)



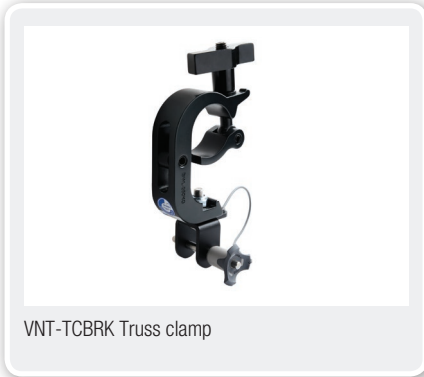
GMT-BUMPER Mobile bumper (12 cabinets maximum)



VNT-POLE Pole mount top / tilt plate



VNT-XHBRK Truss clamp



VNT-TCBRK Truss clamp



GMT-EXBAR Extension bar for extreme tilt applications



GMT-LBUMP Light bumper for 3-cabinet (max) applications



VNI-WS15, GMT-LBUMP and GMI-BNFIK Wall mount for 3-cabinet (max) applications



GMI-IPCOV IP protection cover for outdoor use



VXT-BL515 Quick release pin